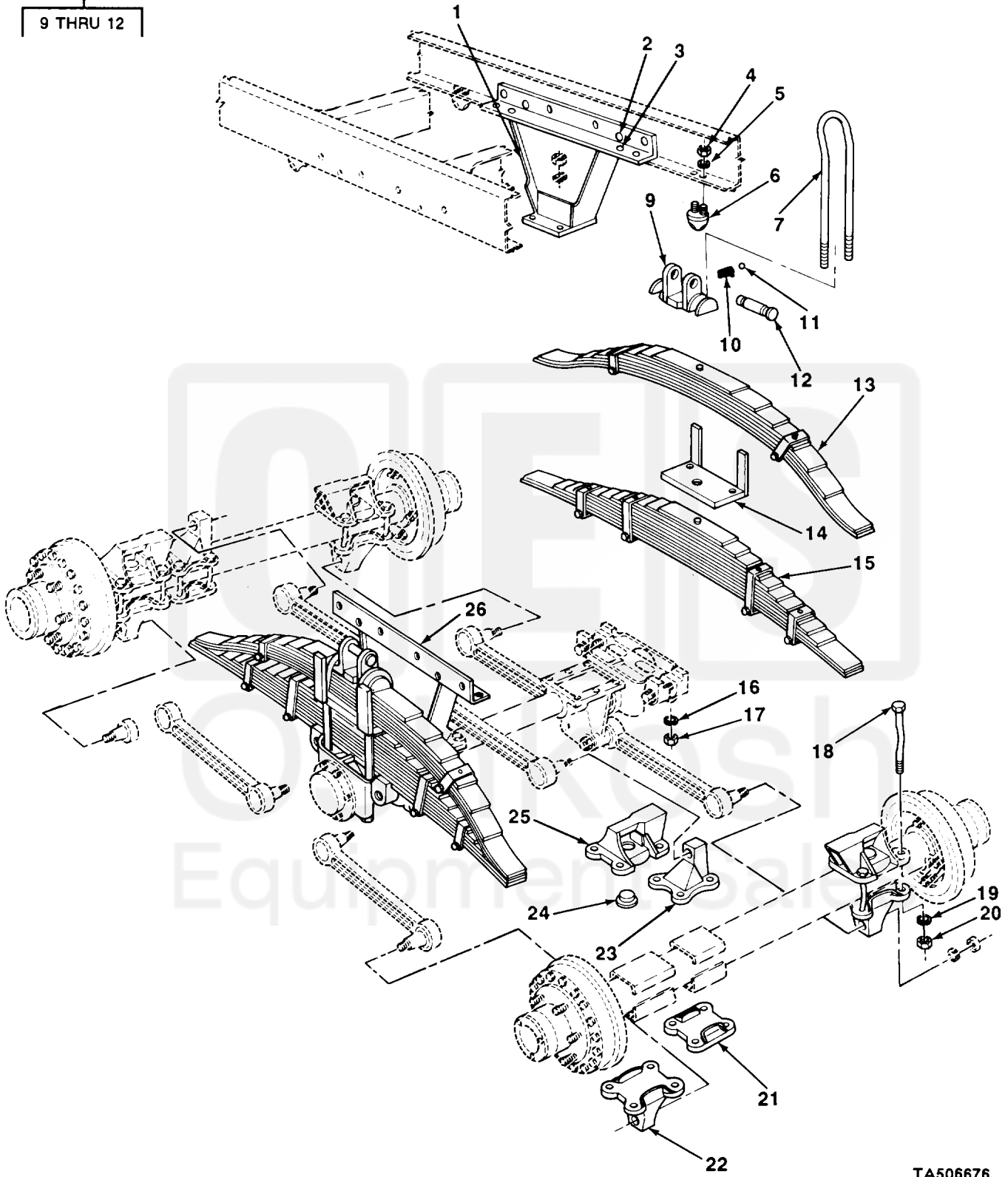


8
9 THRU 12



TA506676

FIGURE 48. SPRINGS.

Current part is item (6) on diagram. Available at www.oshkoshequipment.com

SECTION II (1)	SMR (2)	CAGEC (3)	TM9-2330-238-24P (4)	(5)	(6)
NO	CODE		PART NUMBER	DESCRIPTION AND USABLE ON CODES (UOC)	QTY
GROUP 16 SPRINGS AND SHOCK ABSORBERS					
GROUP 1601 SPRINGS					
FIG. 48 SPRINGS					
1	XBFZZ	19207	8759077	BRACKET ASSEMBLY TANDEM SUSPENSION RH	1
2	PAFZZ	24617	119285	RIVER,SOLID BRACKET ASSEMBLY ATTACH	12
3	XBOZZ	21450	119286	RIVET BRACKET ASSEMBLY ATTACH	8
4	PAOZZ	96906	MS51967-5	NUT,PLAIN,HEXAGON BUMPER ATTACH	8
5	PAOZZ	19207	7410218	WASHER,LOCK BUMPER ATTACH	8
6	PAOZZ	19207	7409335	BUMPER,NONMETALLIC SPRING GUIDE	4
7	PAOZZ	19207	8758919	BOLT,U SEAT ATTACH	4
8	PAOOO	19207	7373221	SEAT	2
9	XAOZZ	19207	7521795	SEAT,SPRING,SUSPENS TANDEM ASSY SEAT	1
10	PAOZZ	19207	7373229	SPRING,HELICAL,COMP SPRING SEAT	1
11	PAOZZ	96906	MS19060-1013	BALL,BEARING SEAT	1
12	PAOZZ	19207	7539661	PIN,GROOVED,HEADED SEAT	1
13	PAOZZ	19207	8758890	SPRING ASSEMBLY,LEA SUSPENSION HELPER	2
14	PAOZZ	19207	10869572	SPACER AND SUPPORTS SPRING ASSEMBLY	2
15	PAOZZ	19207	7368629	SPRING ASSEMBLY,LEA SUSPENSION,MAIN	2
16	PAOZZ	96906	MS35338-51	WASHER,LOCK U-BOLT RETAINING	8
17	PAOZZ	19207	10869934	NUT,PLAIN,HEXAGON U-BOLT RETAINING	8
18	PAOZZ	19207	7060037	BOLT,MACHINE LOWER TORQUE ROD	24
19	PAOZZ	96906	MS35340-51	BRACKET ATTACH (16) UPPER (8) WASHER,LOCK UPPER TORQUE ROD	24
20	PAOZZ	19207	10896688	BRACKET ATTACH NUT,PLAIN,HEXAGON UPPER TORQUE ROD	24
21	PAOZZ	19207	7521834	BRACKET ATTACH BRACKET,PLATE UPPER TORQUE ROD	2
22	PAOZZ	19207	7521833	BRACKET	4
23	PAOZZ	19207	7521832	BRACKET LOWER TORQUE ROD	4
24	PAOZZ	19207	7521639	BRACKET,TORQUE ROD UPPER	2
25	XBOZZ	19207	7059832	PLATE SPRING	4
26	XBFZZ	19207	8758881	BRACKET ASSEMBLY SPRING GUIDE BRACKET ASSEMBLY TANDEM SUSPENSION, LH	4 1

END OF FIGURE

Oshkosh
Equipment Sales

Current part is item (6) on diagram. Available at www.oshkoshequipment.com